

Grasso RR-R36S-28 (screw) package

Specifications

Brand	Grasso
Type	RR-R36S-28 (screw) package
Refrigerant	NH 3 (ammonia)
kW at -10°C/+40°C	673
On steel base frame	✓
Liquid line filter drier	✓
Remarks	Y.O.B. 2009 // *Capacity based on -10/+40°C
Weight in kg.	3400
Package / Rack	✓
Sizes	3400x1600x2000 mm (LxWxH)
Project	Running hours 2503 !!! (as good as new)
Stock	1

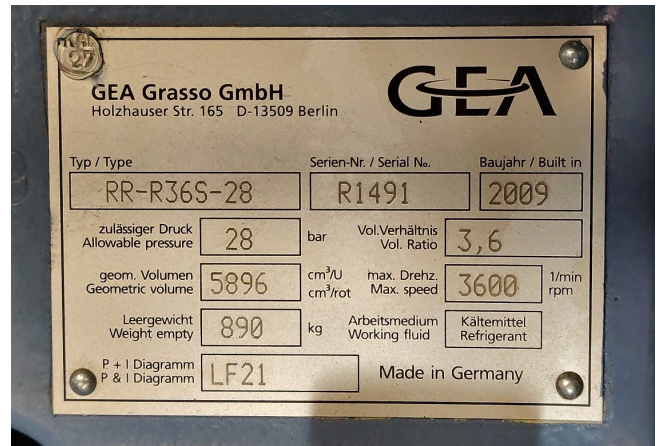
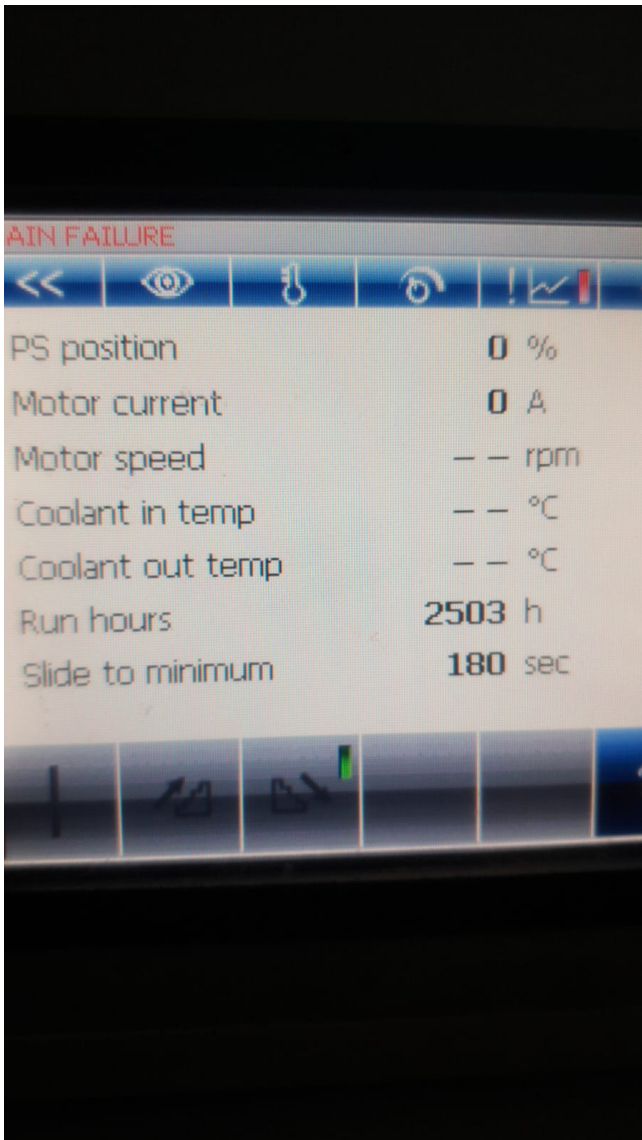


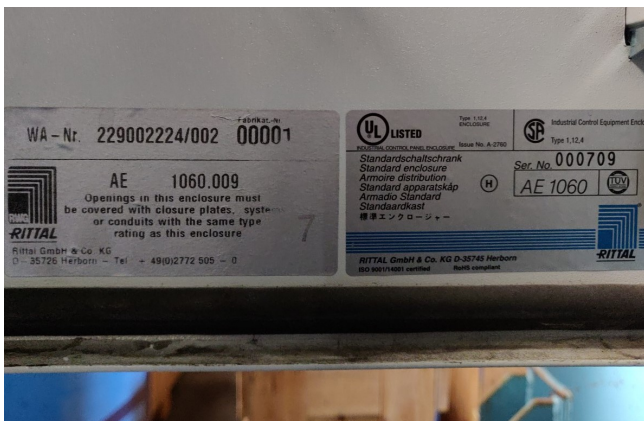
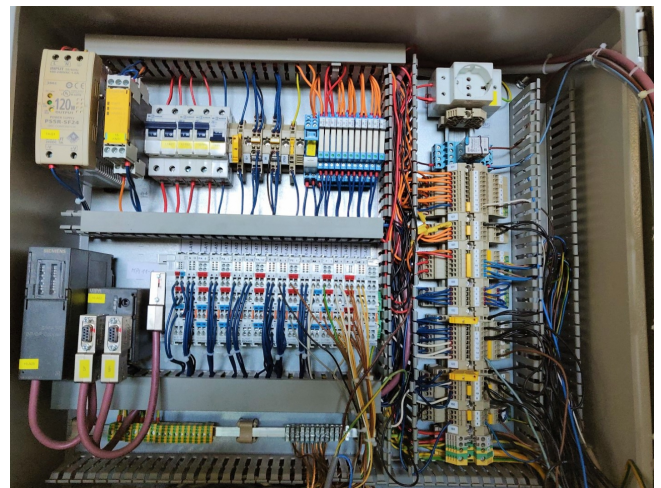
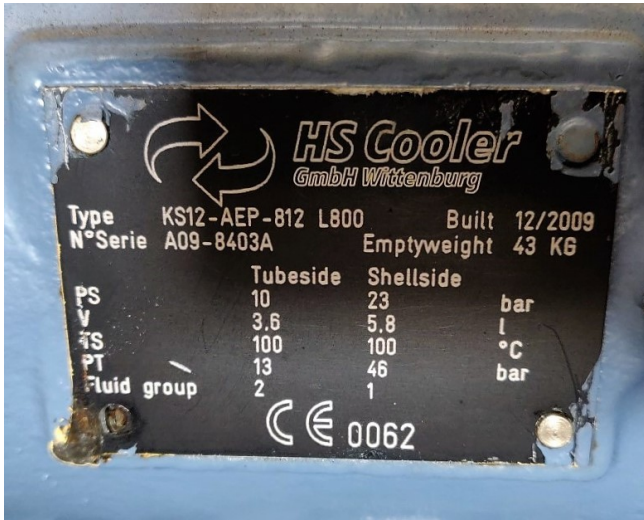
Description

Used Grasso RR-R36S-28 (screw) package

Used Grasso/GEA RR-R36S-25 Screw Compressor / 3600 RPM / Vol. Ratio: 3,6 // This unit uses refrigerant NH3 / R717 // 1x Electric motor: Leroy Somer PLS315M-T / 200 kW at 2970 RPM // Type: RB-2A / 3296-00 / 595L // Electric Cabinet: Goth Typ: SP1 Chiller // 1x Electric motor pump: EMK KAE2A90L / 400 / 50 Hz / 1445 / 1.5kW / Running hours 2503 !!! (as good as new)









GOTH		ELEKTROTECHNIK GMBH INDUSTRIELEKTRONIK PUMPENTECHNIK	
Wittestraße 31 ---- D - 13509 Berlin		CE	
Tel.: (030) 435 696 - 0 ---- Fax: (030) 435 696 - 91			
Goth - Schaltanlage GSC TP			
Typ: SP1 Chiller	Auftr.-Nr.: 369140	Baujahr:	2009
Bemessungs- betriebs- spannung	100-240 VAC	Bemessungs- isolations- spannung	U_i 690 V
Bemessungs- betriebsstrom der Haupt-SS	I_e 10 A	Bemessungs- stoßstrom- festigkeit	I_{pk} 6 kA
Anschluß- leistung	1 kW	Schutzart IP 54 Temperatur +5/+40°C	Maximale Vorsicherung 16 A C/gl
VDE 0660 Teil 507, EN 60204, 60947			
Made in Germany			

